

US16 Corridor Crash Summary (2014 - 2018)

Total US16 Corridor Crashes: 580

Intersections: 159

Roadway Segments: 421

Injury Severity Summary

Fatal injury: 4

Incapacitating injury: 20

Non-incapacitating injury: 53

Possible injury: 47

No injury: 456

Injury Severity Summary

No collision between

2 motor vehicles: 115

Vehicle-animal: 280

Rear-end: 56

Angle: 114

Sideswipe: 14

Head-on: 1

Injury Status

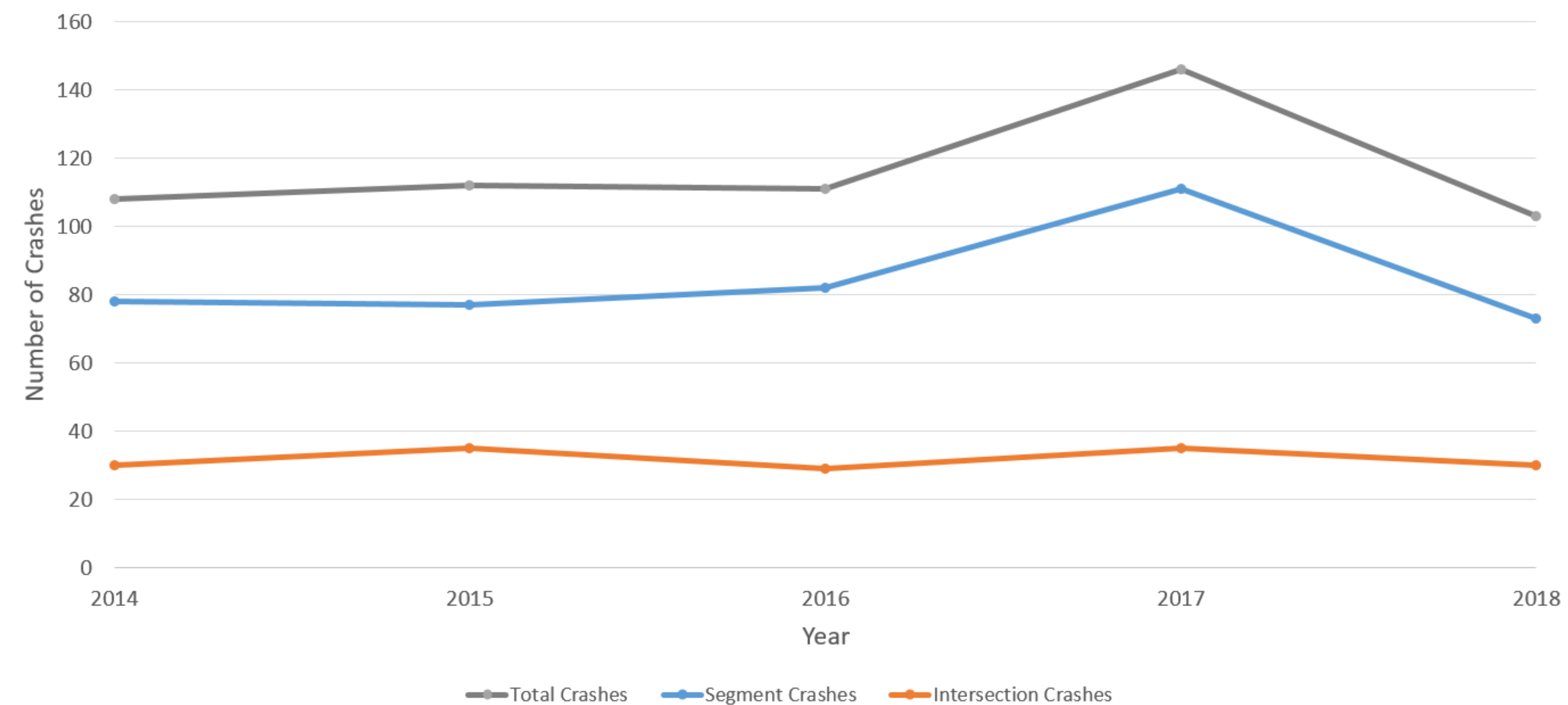
Fatal injury: An injury that results in death within 30 days of a crash.

Incapacitating injury: Any injury, other than a fatal injury, which prevents the injured person from walking, driving, or normally continuing activities the person was capable of performing before the injury occurred.

Non-incapacitating injury: Any injury, other than a fatal or incapacitating injury, which is evident to observers at the crash scene.

Possible injury: Any injury reported or claimed which is not a fatal, incapacitating, or non-incapacitating injury.

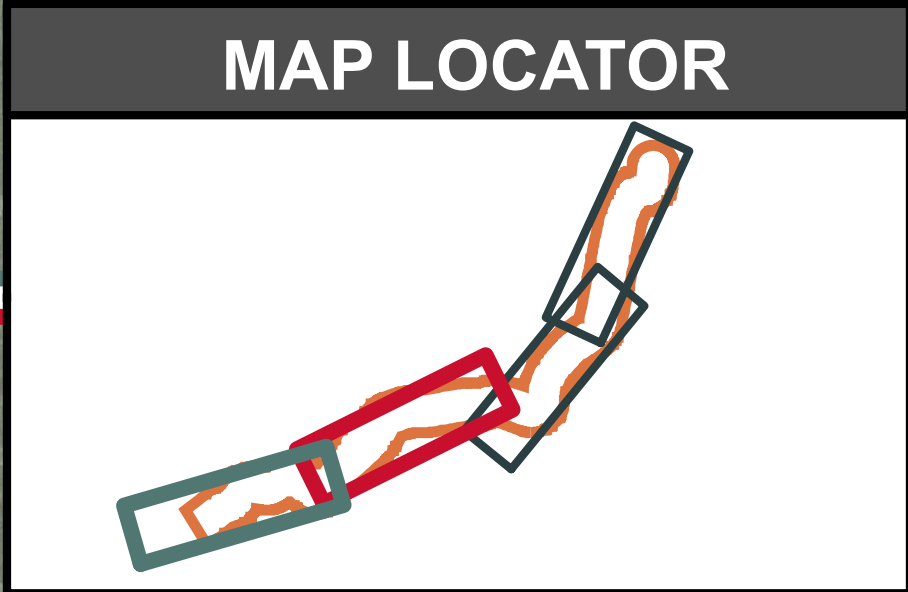
US16 Corridor Crashes by Year (2014 - 2018)



Time of Day/ Month of Year Summary

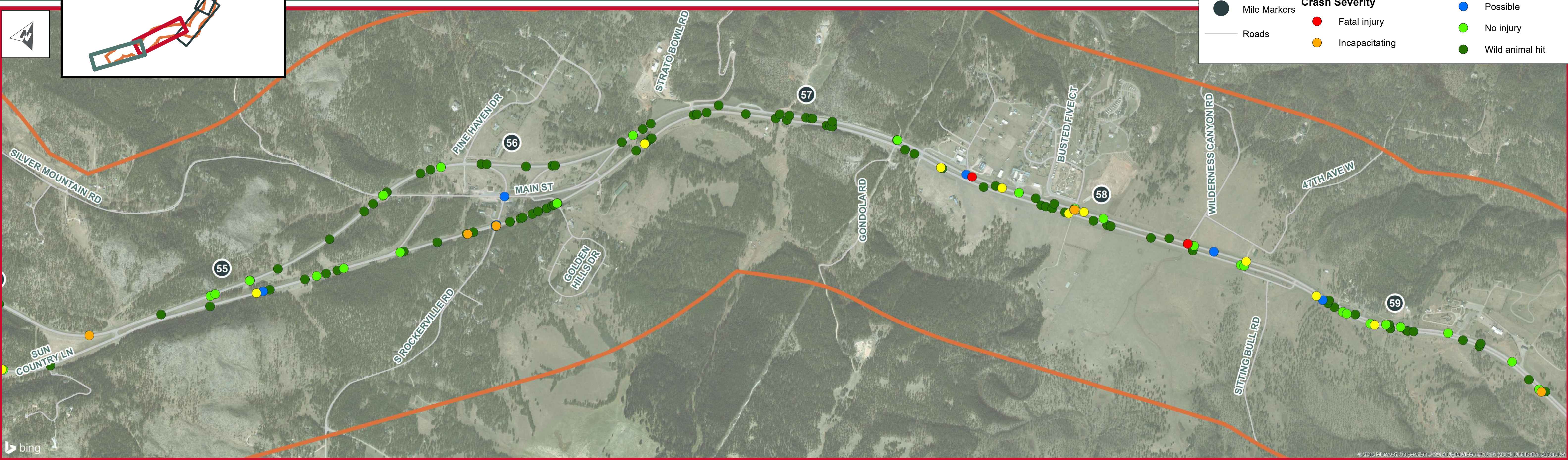


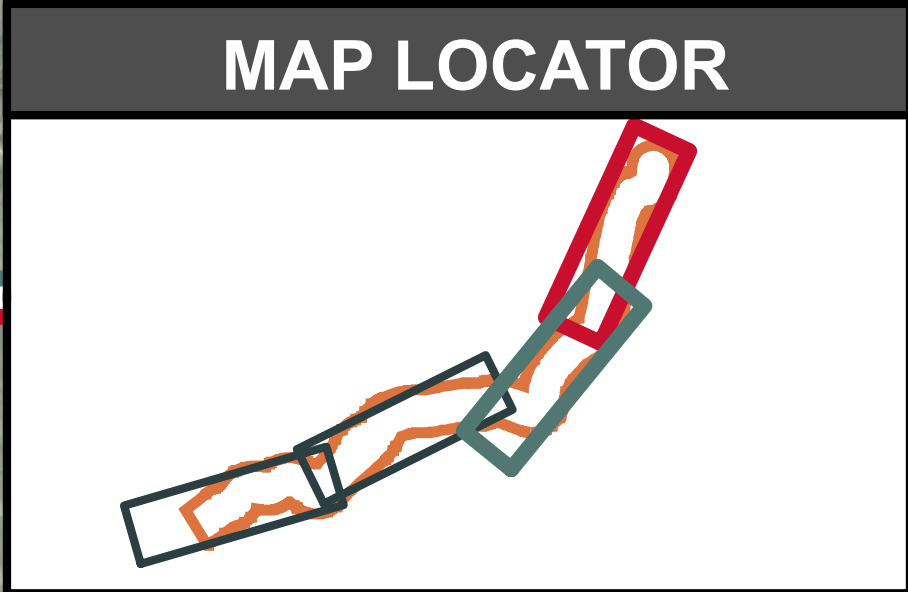
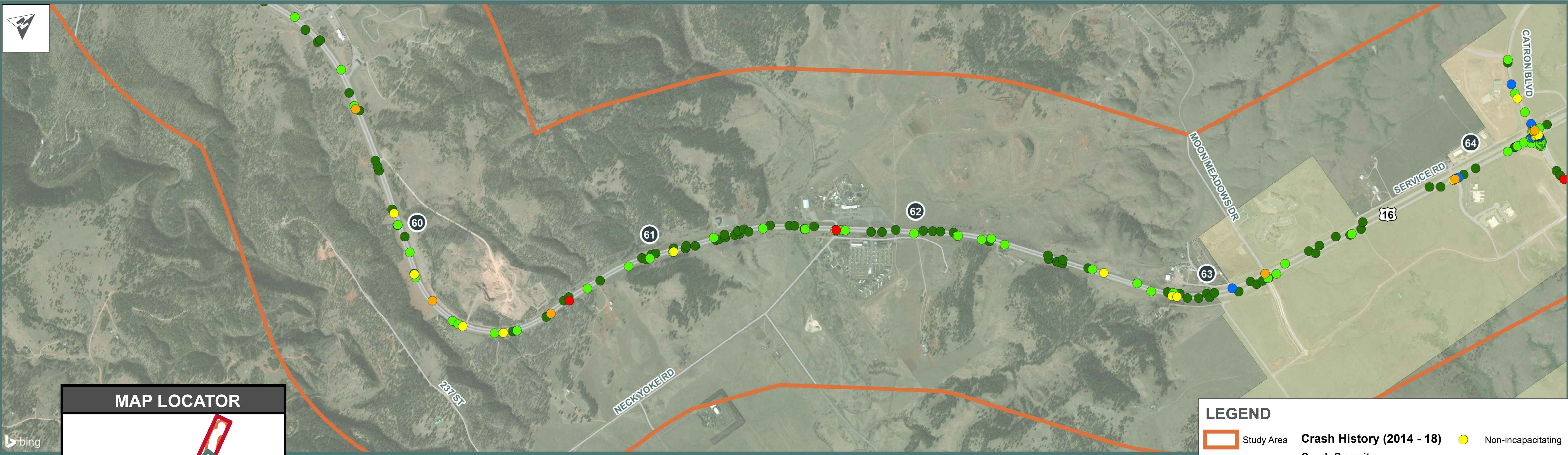
Month	Light Condition				Total
	Dawn	Daylight	Dusk	Dark	
January	1	19	0	17	37 (6%)
February	1	20	0	11	32 (6%)
March	2	23	2	9	36 (6%)
April	3	21	1	12	37 (6%)
May	2	26	1	14	43 (7%)
June	2	48	1	21	72 (12%)
July	1	30	2	21	54 (9%)
August	0	28	2	22	52 (9%)
September	1	25	1	23	50 (9%)
October	3	17	2	31	53 (9%)
November	6	15	4	53	78 (13%)
December	3	12	0	21	36 (6%)
Total	25 (4%)	284 (49%)	16 (3%)	255 (44%)	580 (100%)



LEGEND

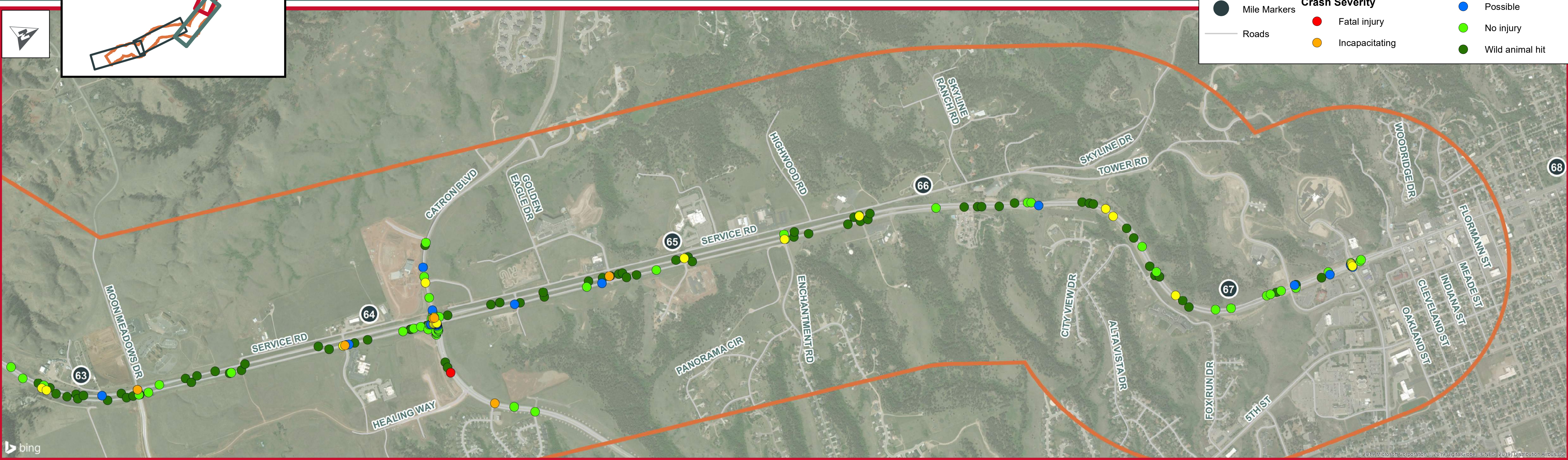
Study Area	Crash History (2014 - 18)	Non-incapacitating
Mile Markers	Crash Severity	Possible
Roads	Fatal injury	No injury
	Incapacitating	Wild animal hit





LEGEND

Study Area	Crash History (2014 - 18)	Non-incapacitating
Mile Markers	Crash Severity	Possible
Roads	Fatal injury	No injury
	Incapacitating	Wild animal hit



Crash History Spot Location Review

US16 corridor highway segments and intersections were reviewed to identify locations that exhibit a higher crash rate than other similar locations along the corridor. This comparison accounts for traffic volumes and injury severity for each location. The following provides a summary of a few of these locations that warrant further investigation.

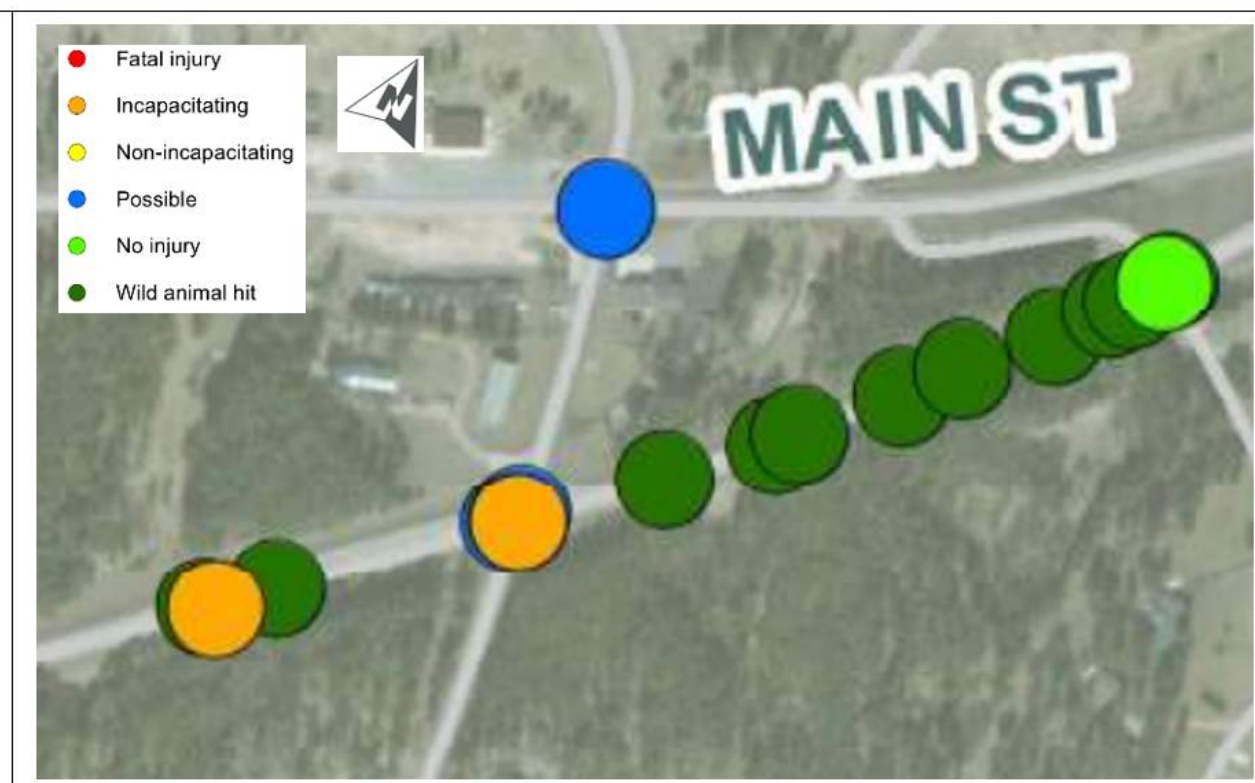
Highway Segments

US16 E and Rockerville Road Intersection Crash Summary

Total Crashes: 5
Crash Rate: 0.54 crashes/MEV
Weighted Crash Rate:
1.40 crashes/MEV
Intersection Control: TWSC

Injury Crash Summary
Incapacitating: 2
Possible: 2

Manner of Collision Summary
Angle: 4
Roadway departure: 1

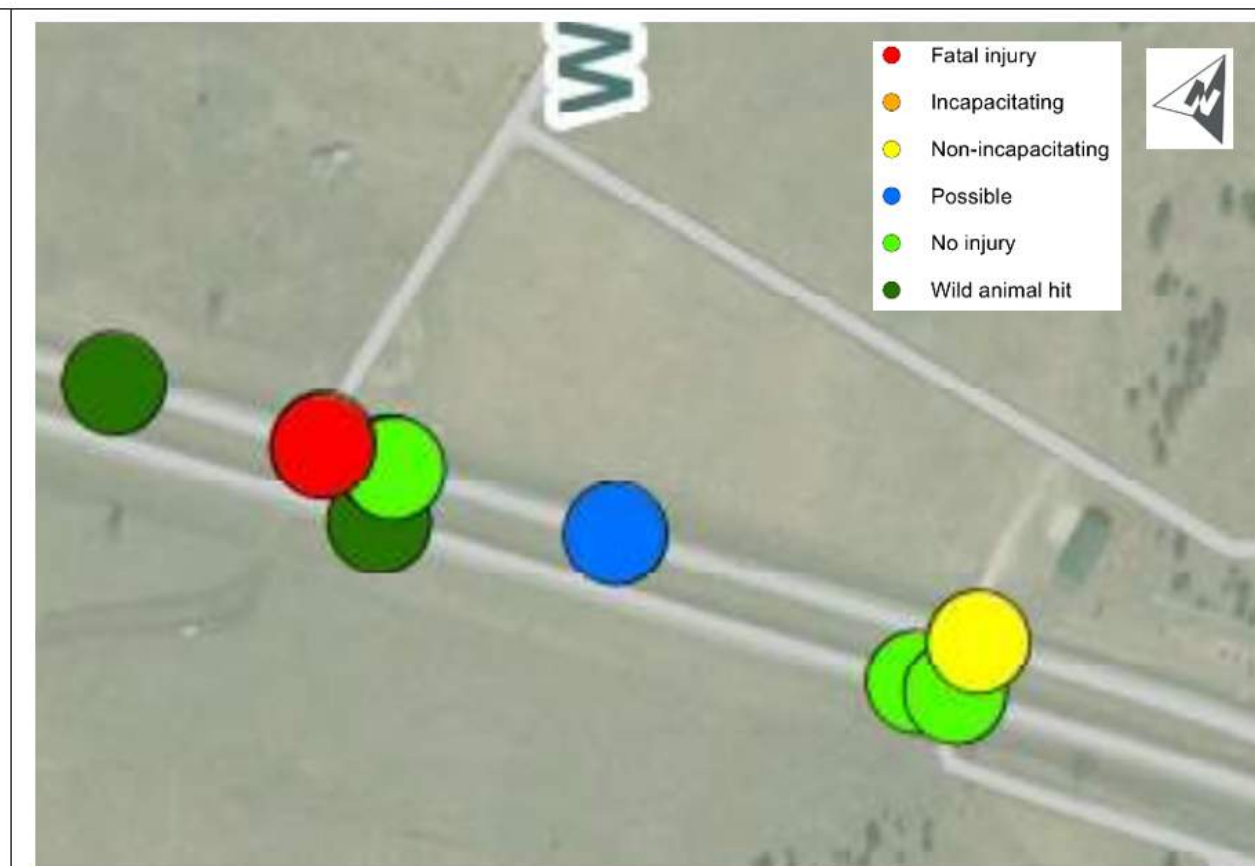


US16 and Wilderness Canyon Road Intersection Crash Summary

Total Crashes: 5
Crash Rate: 0.31 crashes/MEV
Weighted Crash Rate:
1.23 crashes/MEV
Intersection Control: TWSC

Injury Crash Summary
Fatal: 1
Incapacitating: 1
Possible: 1

Manner of Collision Summary
Angle: 4
Sideswipe: 1 (same direction)

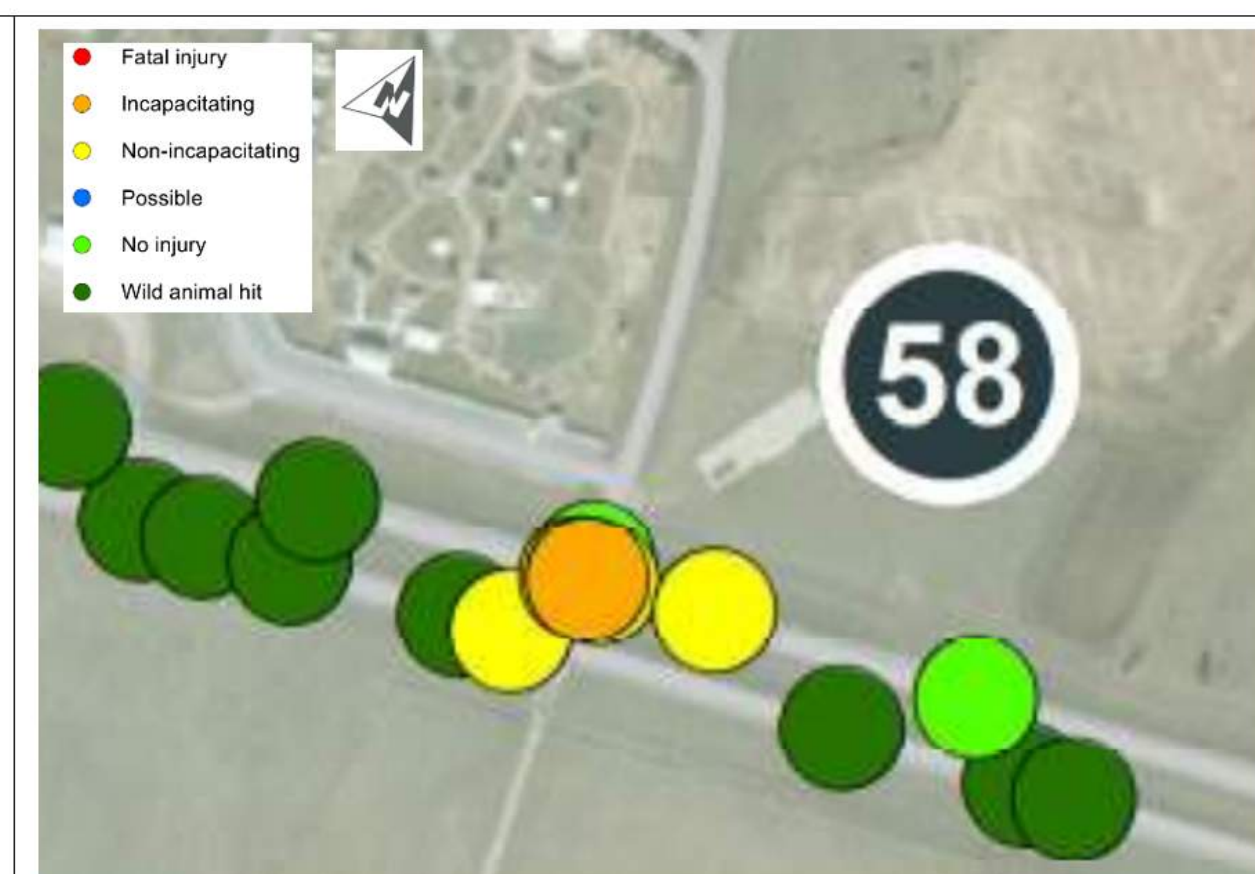


US16 and Busted Five Lane Intersection Crash Summary

Total Crashes: 6
Crash Rate: 0.37 crashes/MEV
Weighted Crash Rate:
0.97 crashes/MEV
Intersection Control: TWSC

Injury Crash Summary
Incapacitating: 1
Non-incapacitating: 2
Possible: 2

Manner of Collision Summary
Angle: 4
Roadway departure: 2



Intersections

US16 and US16B/Catron Boulevard Intersection Crash Summary

Total Crashes: 88
Crash Rate: 1.67 crashes/MEV
Weighted Crash Rate:
2.96 crashes/MEV
Intersection Control: Traffic signal

Injury Crash Summary
Fatal: 0
Incapacitating: 2
Non-incapacitating: 14
Possible: 18

Manner of Collision Summary
Angle: 48
Rear-end: 32
Head-on: 1
Sideswipe: 1
Roadway departure: 6



US16 and Neck Yoke Road Intersection Crash Summary

Total Crashes: 4
Crash Rate: 0.16 crashes/MEV
Weighted Crash Rate:
0.74 crashes/MEV
Intersection Control: TWSC

Injury Crash Summary
Fatal: 1
Incapacitating: 2

Manner of Collision Summary
Angle: 4



Intersection Crash Rate: crashes/million entering vehicles (crashes/MEV)
Segment Crash Rate: crashes/million vehicle miles traveled (crashes/MVMT)

Weighted crash rate applies a weighted value to each crash based on injury severity, with fatal crashes weighted higher than a property damage only crash.

Signal: signalized intersection
TWSC: two-way stop control intersection

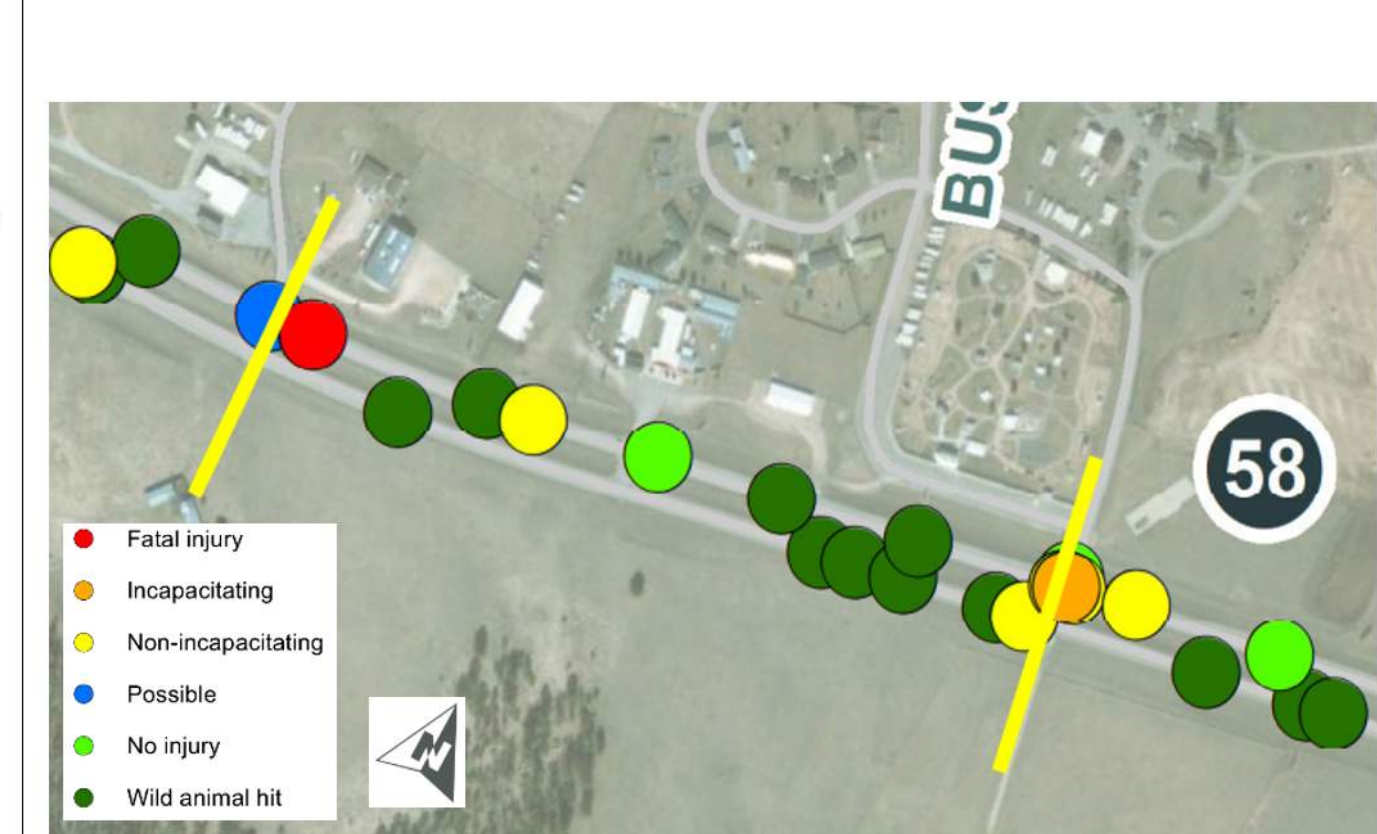
Strato Rim Drive to Busted Five Lane Crash Summary

Total Crashes: 19
Crash Rate: 3.50 crashes/MVMT
Weighted Crash Rate:
8.37 crashes/MVMT
Approx. Segment Length: 0.35 miles

Injury Crash Summary
Fatal: 1
Incapacitating: 1
Non-incapacitating: 5
Possible: 2

Manner of Collision Summary
Angle: 4
Rear-end: 2
Roadway departure: 4
Vehicle-animal: 9

Winter Road Conditions
Snow/ice: 1



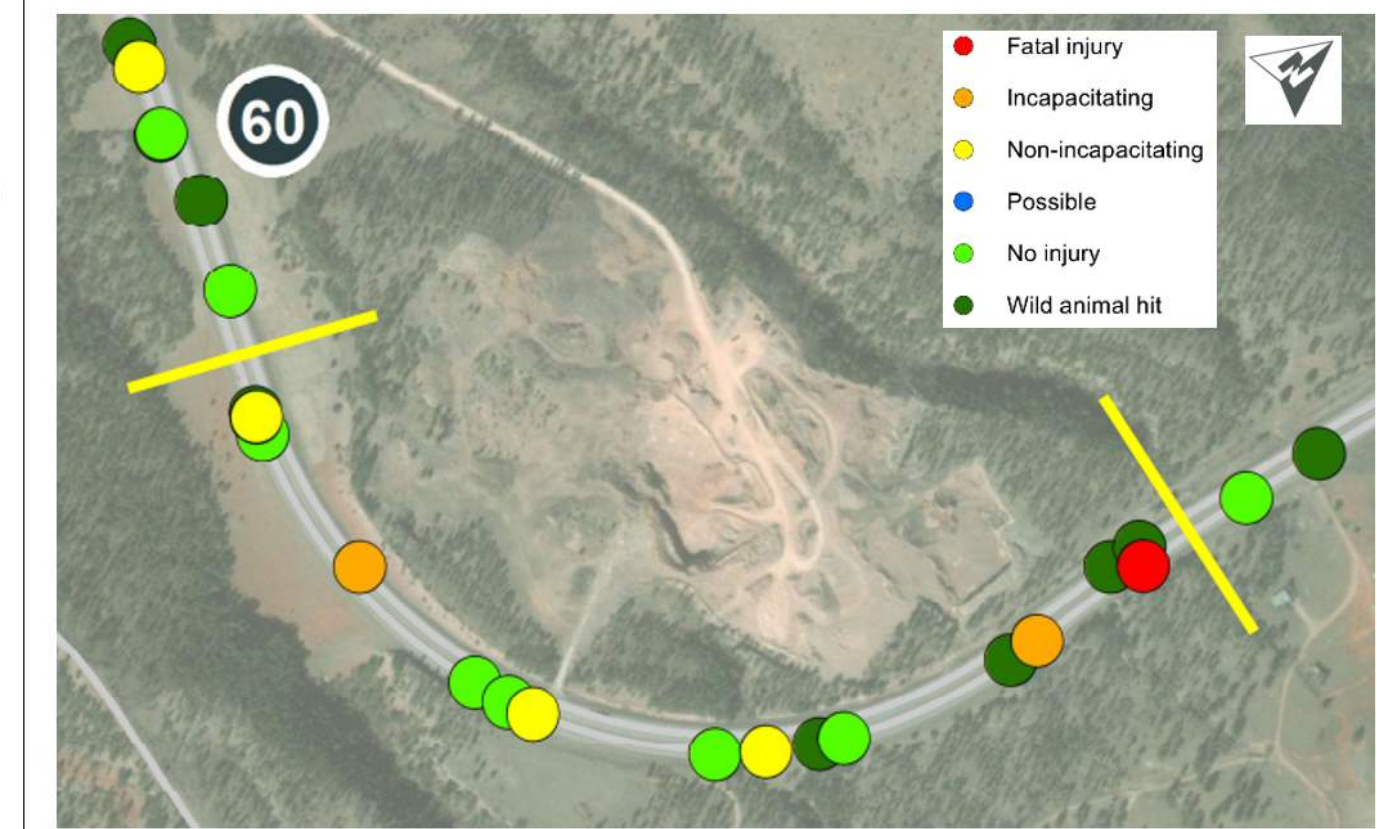
Horizontal Curve (west end) to Horizontal Curve (east end) Crash Summary

Total Crashes: 18
Crash Rate: 2.30 crashes/MVMT
Weighted Crash Rate:
4.01 crashes/MVMT
Approx. Segment Length: 0.62 miles

Injury Crash Summary
Fatal: 1
Incapacitating: 2
Non-incapacitating: 3

Manner of Collision Summary
Rear-end: 1
Sideswipe: 1
Roadway departure: 10
Vehicle-animal: 6

Winter Road Conditions
Snow/ice: 9



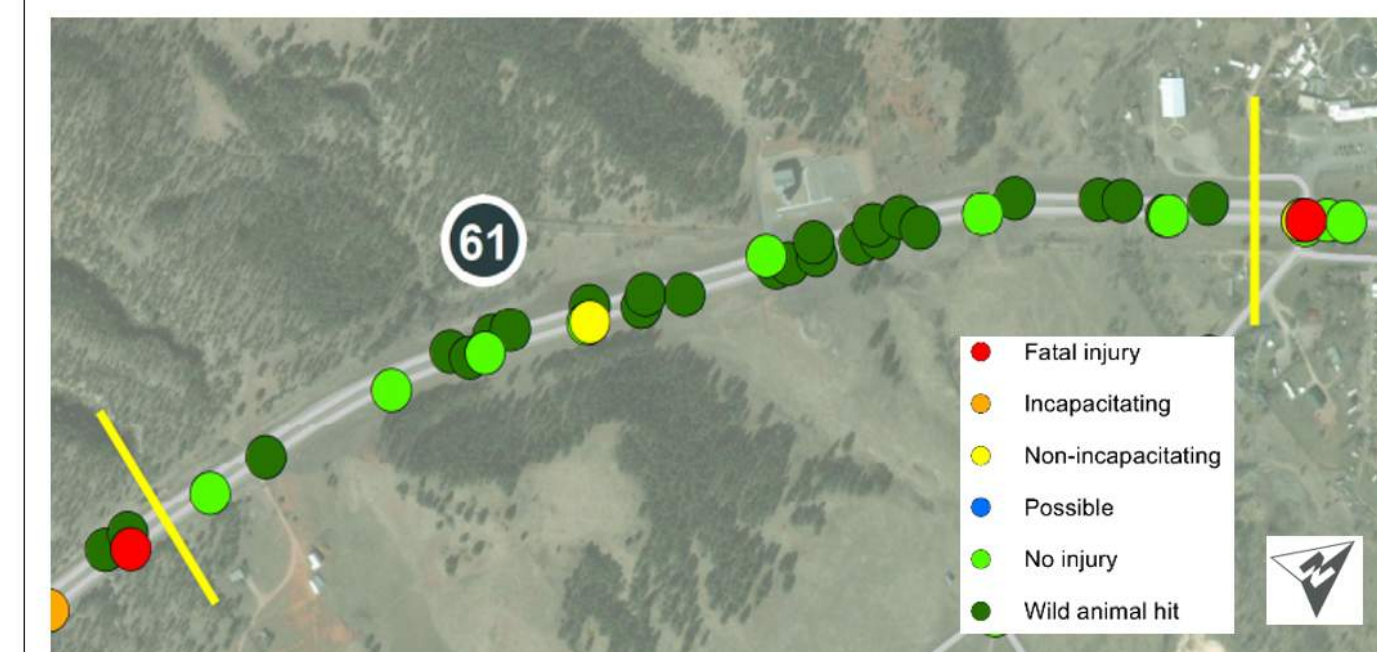
Horizontal Curve (east end) to Neck Yoke Road Crash Summary

Total Crashes: 32
Crash Rate: 2.41 crashes/MVMT
Weighted Crash Rate:
2.30 crashes/MVMT
Approx. Segment Length: 0.9 miles

Injury Crash Summary
Non-incapacitating: 1

Manner of Collision Summary
Angle: 1
Sideswipe: 1
Roadway departure: 6
Vehicle-animal: 24

Winter Road Conditions
Snow/ice: 4



US16 Corridor Winter Road Condition Crashes (2014-2018)

Total Winter Road Conditions Crashes: 68

12% percent of all US16 corridor crashes

14 injury crashes

Includes crashes where road condition noted as snow, ice, slush, or frost on crash report.

US16 Corridor Vehicle-Animal Crashes (2014 - 2018)

Total Vehicle-Animal Crashes: 276

47.5% of all US16 corridor crashes

65.5% of all US16 segment crashes (non-intersection)

