



Presentation
will begin at
5:40 p.m.



PENNINGTON COUNTY
South Dakota

US16 Corridor Study

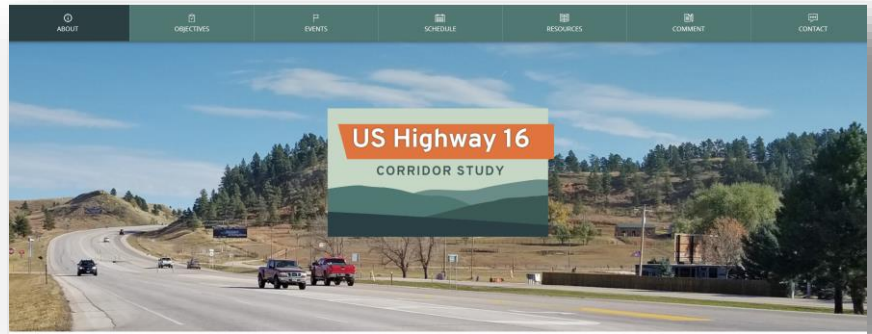
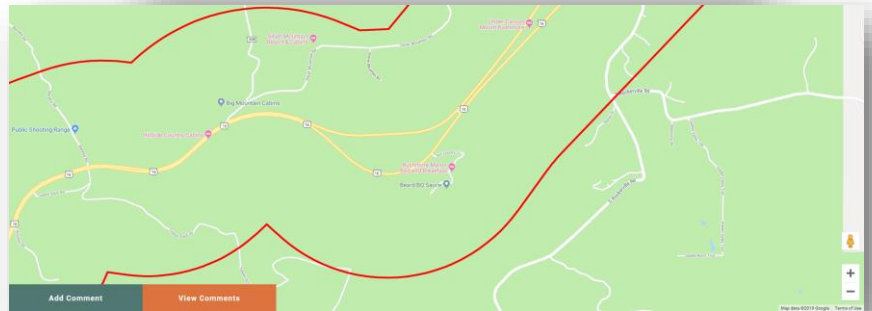
Public Information Meeting #1

July 23, 2019



Housekeeping Items

- Please sign-in
- Comment card and handout
- Study website: www.us16corridor.com
- Meeting format
 - Introductory presentation
 - Open house
- Methods to provide feedback
 - Comment cards
 - Study website
 - Study contact (email, phone, mail)
 - Commuter surveys

A screenshot of a 'Contact' form. The title 'Contact' is in orange. Below it, the text reads 'USE THE COMMENT FORM BELOW OR CONTACT PROJECT MANAGEMENT WITH QUESTIONS'. The form contains several input fields: 'First Name' and 'Last Name' (two separate boxes), 'Email Address', and 'Phone Number' (two separate boxes). Below these is a large text area labeled 'Your comment'. At the bottom, there is a line of text: 'Enter an email or phone above if you'd like to be contacted', followed by an orange 'SUBMIT' button.

Purpose of Today's Meeting

1. Introduce the study
2. Gather feedback on US16 corridor transportation needs
3. Solicit input on the Draft Purpose and Need statements

Study Team

- Study Contacts

Jon Wiegand

Consultant (HDR) Project Manager

Steve Gramm

SDDOT Project Manager

- Study Advisory Team



U.S. Department of Transportation
Federal Highway Administration



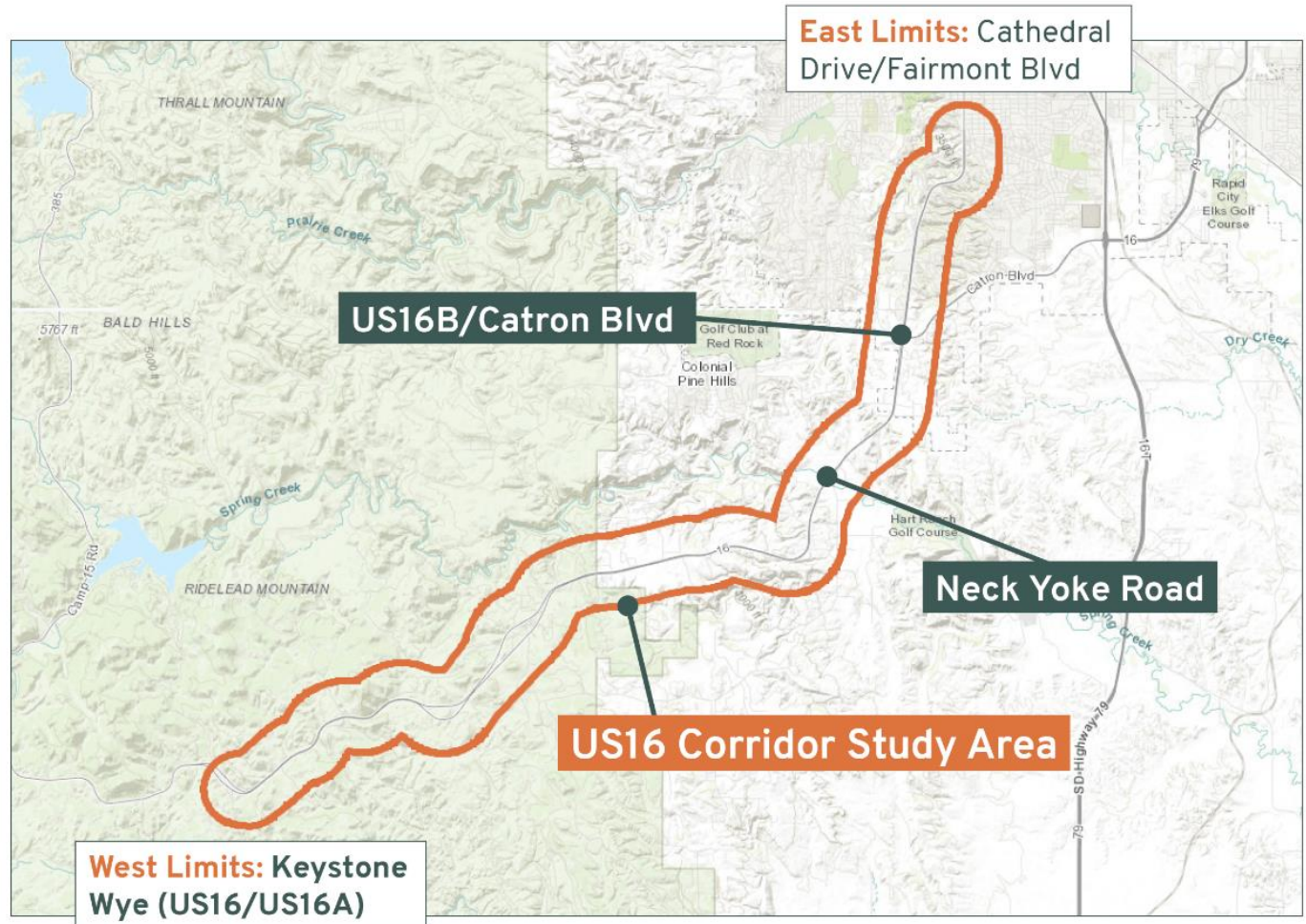
PENNINGTON COUNTY
South Dakota

- Study Consultant



Study Area

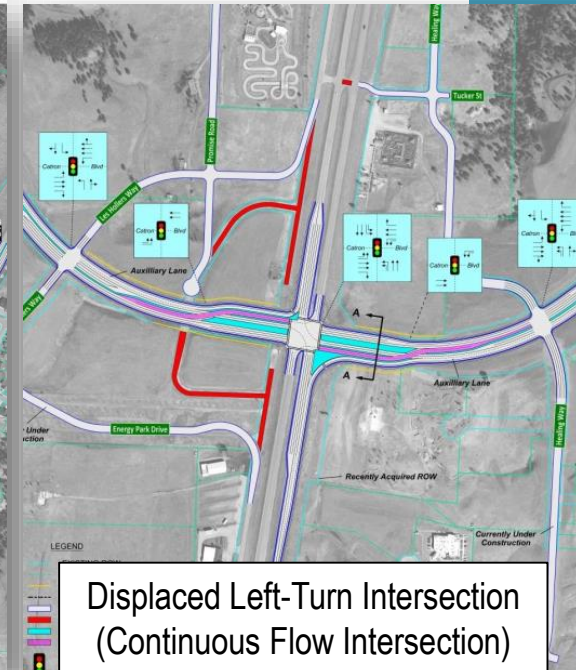
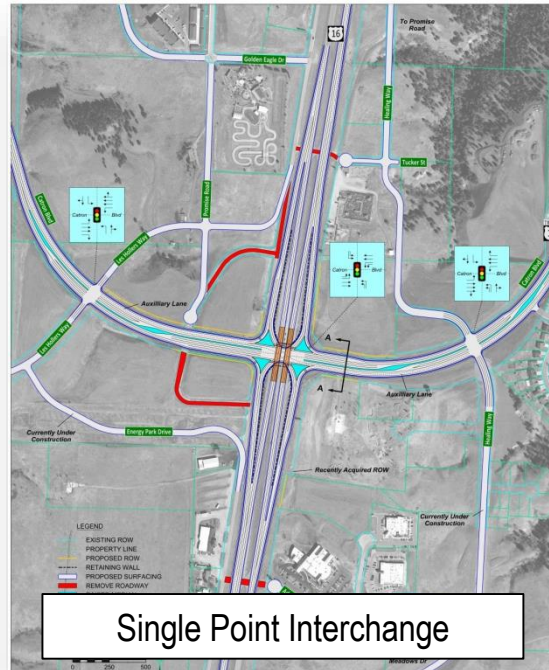
- US16
- Catron Boulevard/
US16 Bypass
- Neck Yoke Road
- US16 Service Roads
- US16 Ramps at
Rockerville



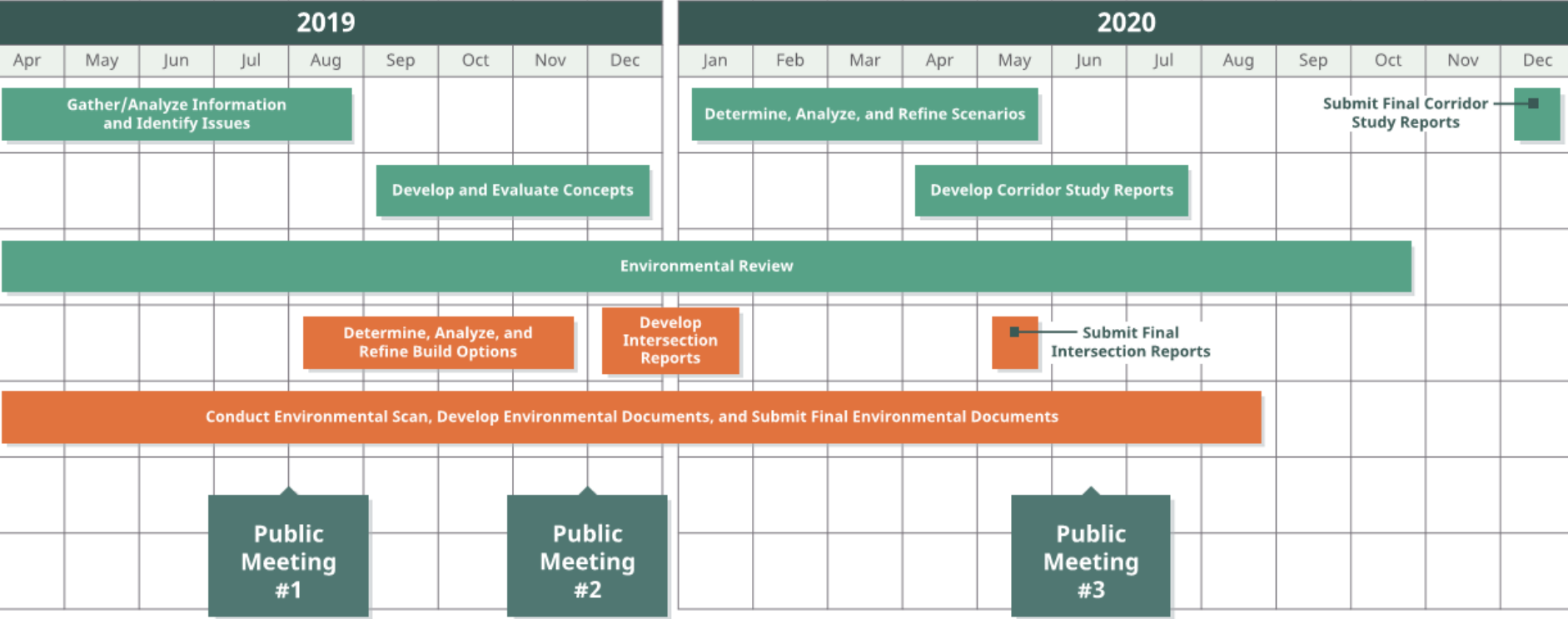
Study Goals

Develop a long-range plan for the US16 corridor.

- US16 & US16B/Catron Boulevard intersection
- US16 & Neck Yoke Road intersection
- Corridor lanes and access
 - Service roads
 - Auxiliary lanes,
 - Ramps,
 - Traffic control, etc.
- Environmental documentation

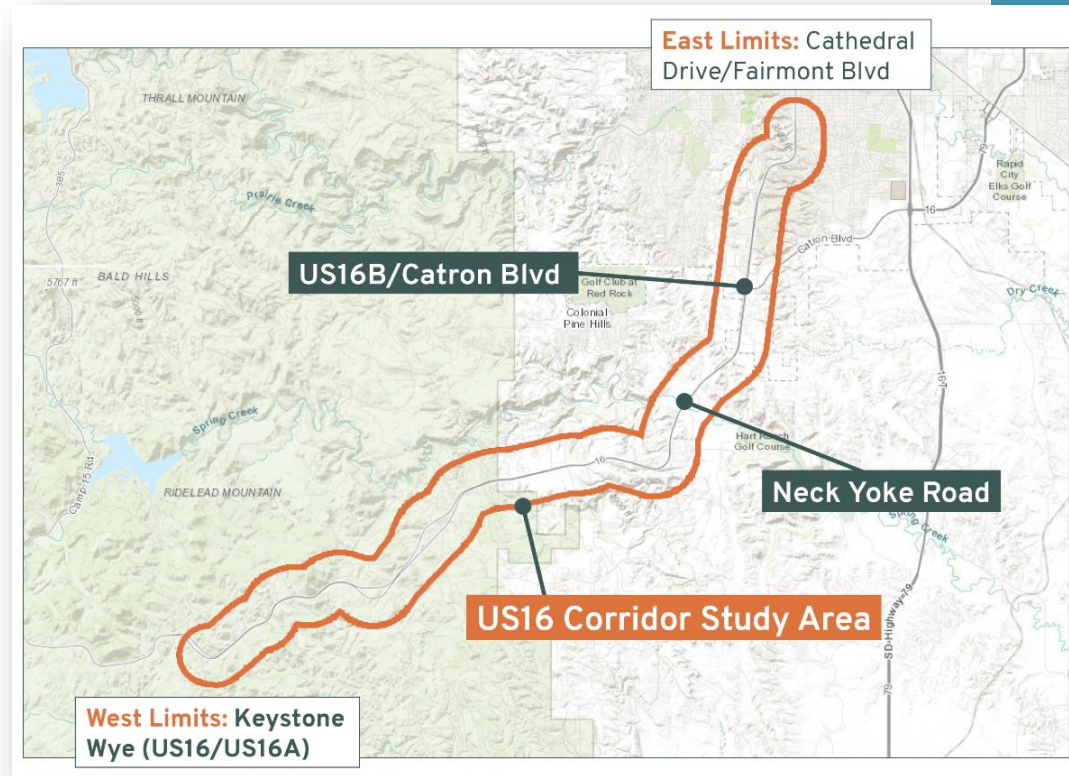


Study Process and Schedule



Future Study Area Projects

- 2019 – 2022 SDDOT
 - US16B & Healing Way traffic signal (2019)
 - US16 & Neck Yoke Road intersection lighting (2019)
 - High friction surface treatment southwest of Neck Yoke Road area (2019)
 - US16 intersection turn lanes (2019/2020)
- 2023 – 2026 SDDOT
 - US16 & US16B/Catron Blvd intersection (FY 2026)
 - US16 & Neck Yoke Road intersection (FY 2026)



Transportation Needs Examples

▪ Traffic

- Future-year forecasts & operations (2050)
- Route reliability
- US16 service roads
- Development impacts

▪ Safety

▪ Intersection warrants

- Traffic signals
- Turn lanes

▪ Access

▪ Winter weather

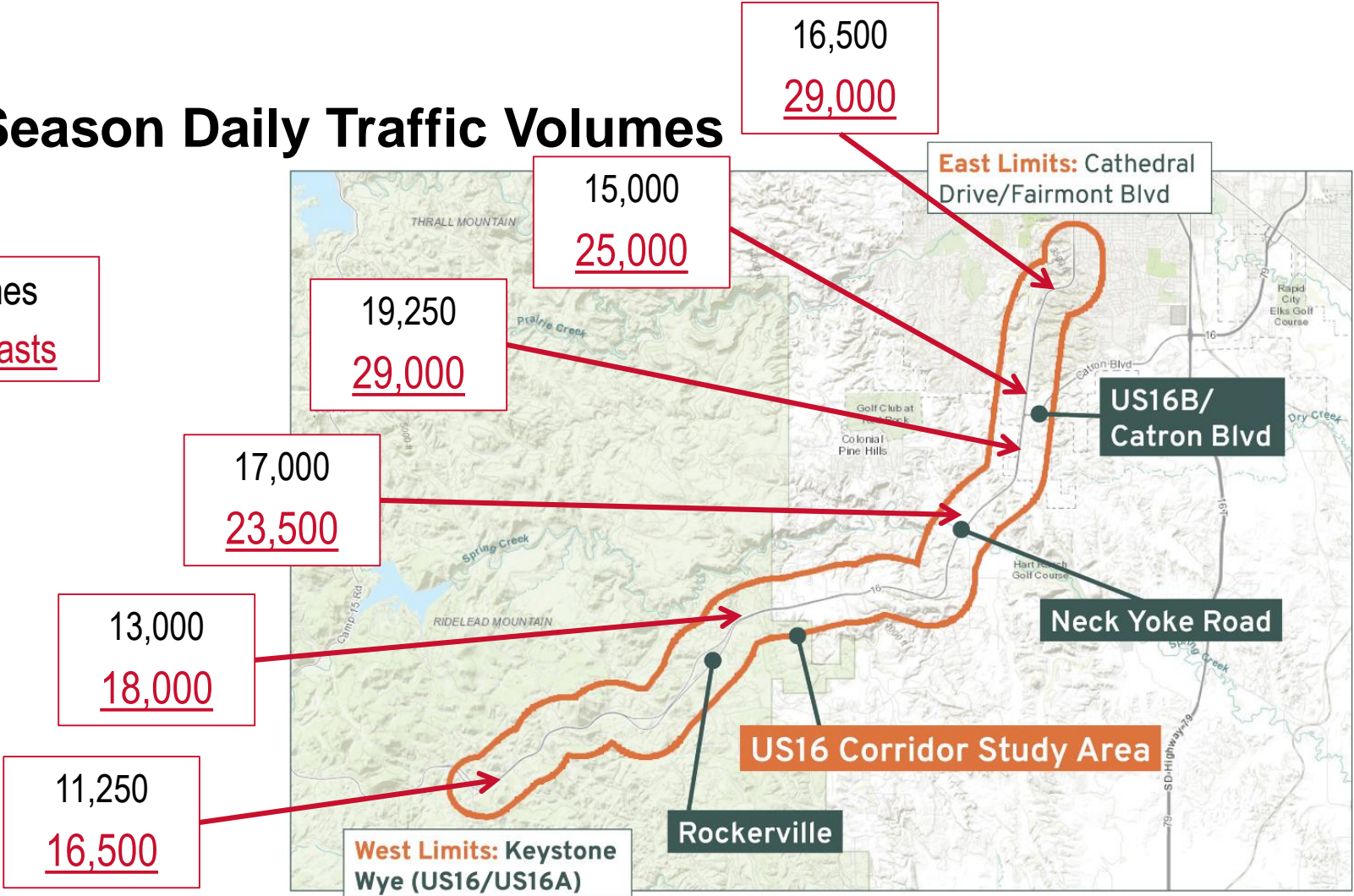
▪ Intelligent Transportation Systems (ITS)

▪ Bicycle and pedestrian facilities



Design Season Daily Traffic Volumes

2019 Volumes
2050 Forecasts



AM & PM Peak Hour Traffic Operations Summary

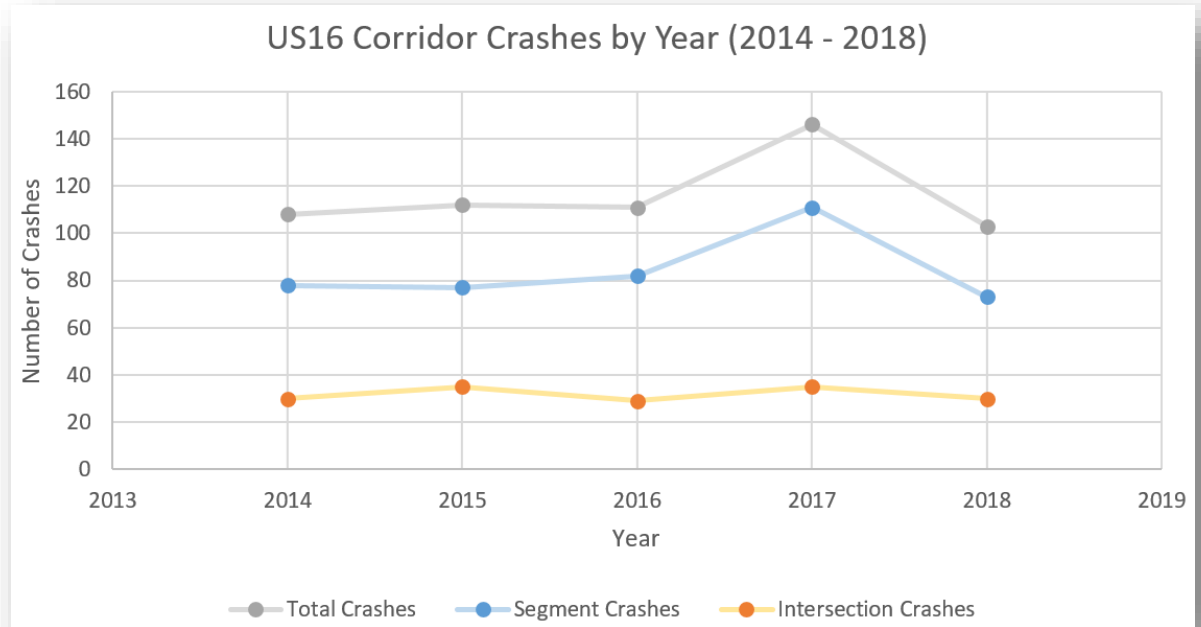
Example traffic operations needs:

- US16/US16B/Catron Boulevard intersection long-term operations
- Development-driven traffic growth and changing traffic patterns
 - Access plan
 - Intersection configuration
 - Intersection traffic control
 - Local roadway network connectivity
 - Service road operations
 - Maintain intended function of US16 corridor



US16 Crash History Review (2014-2018)

- **580 total crashes**
 - 73% segment
 - 27% intersection
- 24 fatal or serious injury crashes
- 48% vehicle-animal crashes
- June and November highest frequency months
 - 44% of all occurred at night



Crash History Review (2014-2018)

Example locations with identified safety needs:

- US16/US16B/Catron Boulevard intersection
- Neck Yoke Road intersection
- Horizontal curve and steep grade southwest of Neck Yoke Road area
- Strato Rim Drive to Wilderness Canyon Road area
- Rockerville area



US16/US16B/Catron Boulevard Intersection: Draft Purpose and Need

- Purpose: To improve traffic operations and safety and support the planned mix use urban development that is occurring in the area.
- Needs:
 - Poor traffic operations
 - High crash rates
 - Rapidly urbanizing land use



US16/Neck Yoke Road Intersection: Draft Purpose and Need

- Purpose: To improve safety and access management in the area of Neck Yoke Road.
- Needs:
 - High weighted crash rate (severe crashes)
 - Multiple access points
 - Narrow median separation



Next Steps...

- Compile feedback and complete analysis
- Corridor: develop concepts
- US16/US16B/Catron Blvd and US16/Neck Yoke Road intersections: refine build options
- Present refined Build Option intersections to public and stakeholders – Late Fall/Winter 2019



Today's Open House

Display Boards

- Traffic Volumes and Operations
- Crash History Review (2014 – 2018)
- US16/US16B/Catron Boulevard Intersection Layouts
 - Single Point Interchange
 - Displaced Left-Turn Intersection
- Draft Purpose and Need Statements and Environmental Considerations
- Aerial Maps with Parcel Boundaries

Thank You!

- Please provide feedback on corridor transportation needs
 - *Deadline: August 6, 2019*
- Study website: www.us16corridor.com
- Next Meeting: Late Fall/Winter 2019

Study Contacts

Jon Wiegand

Consultant (HDR) Project Manager

605-782-8105

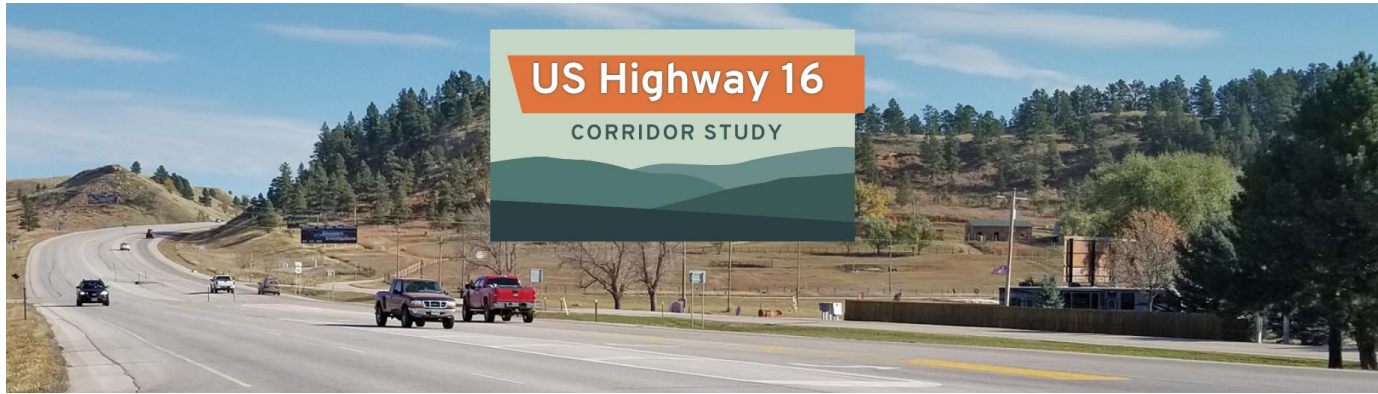
jonathan.Wiegand@hdrinc.com

Steve Gramm

SDDOT Project Manager

605-773-6641

Steve.gramm@state.sd.us



HDR