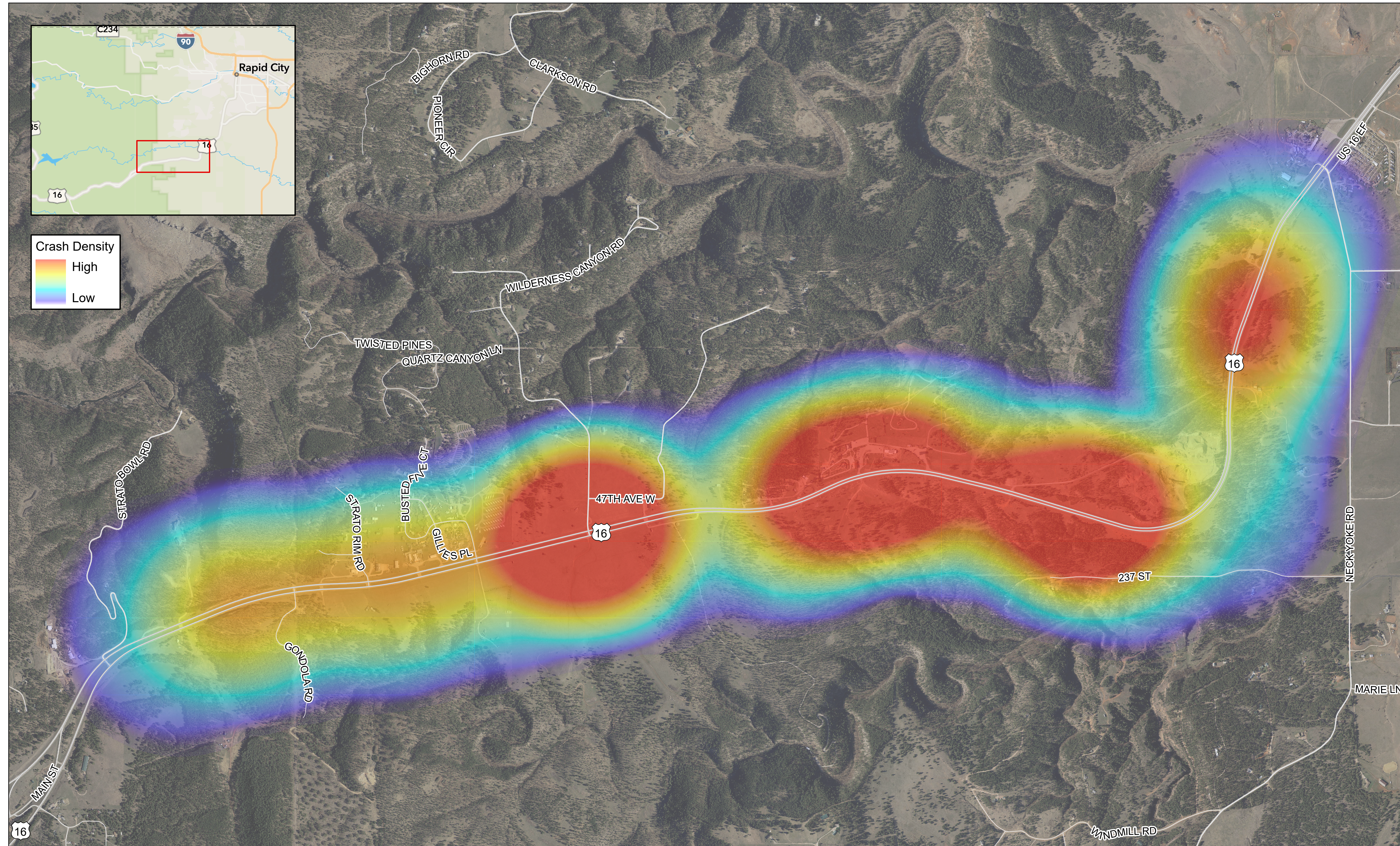


# CRASH DENSITY (2018-2022)

## U.S. HIGHWAY 16 CORRIDOR STUDY: RURAL SUB-AREA ANALYSIS



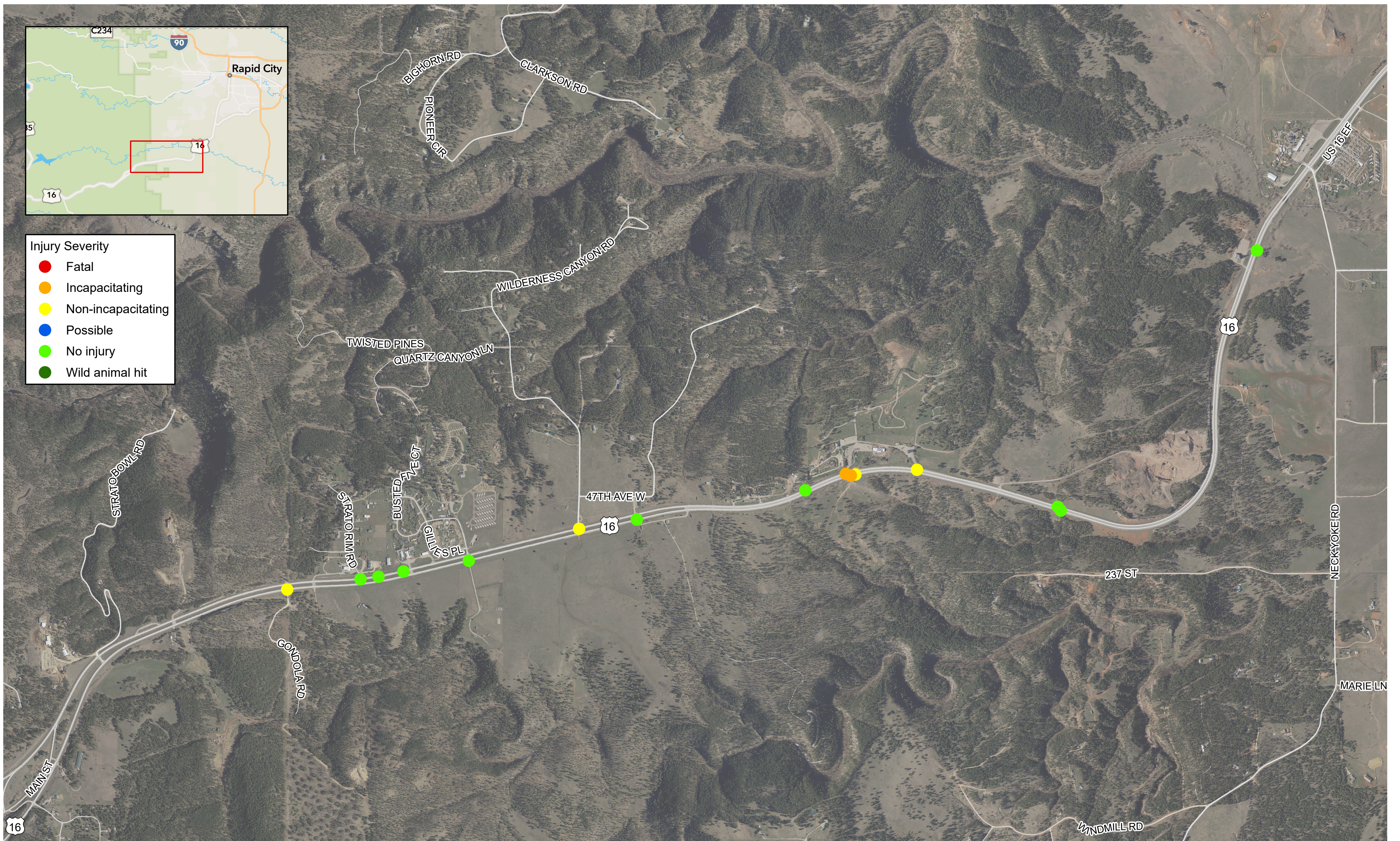
Crash density excludes vehicle-animal crashes



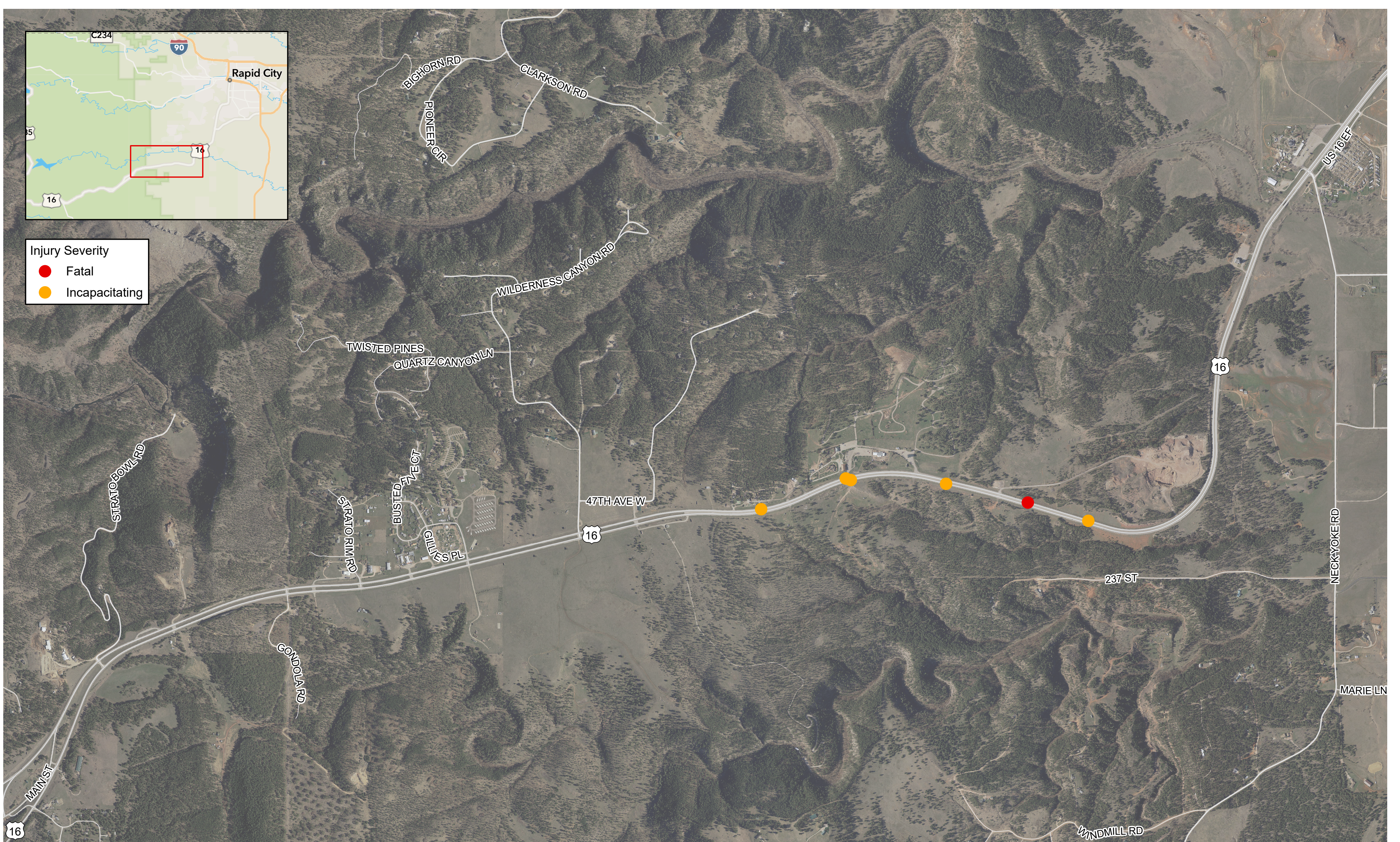
# CRASH HISTORY (2018-2022)

## U.S. HIGHWAY 16 CORRIDOR STUDY: RURAL SUB-AREA ANALYSIS

### ANGLE CRASHES (2018-2022)



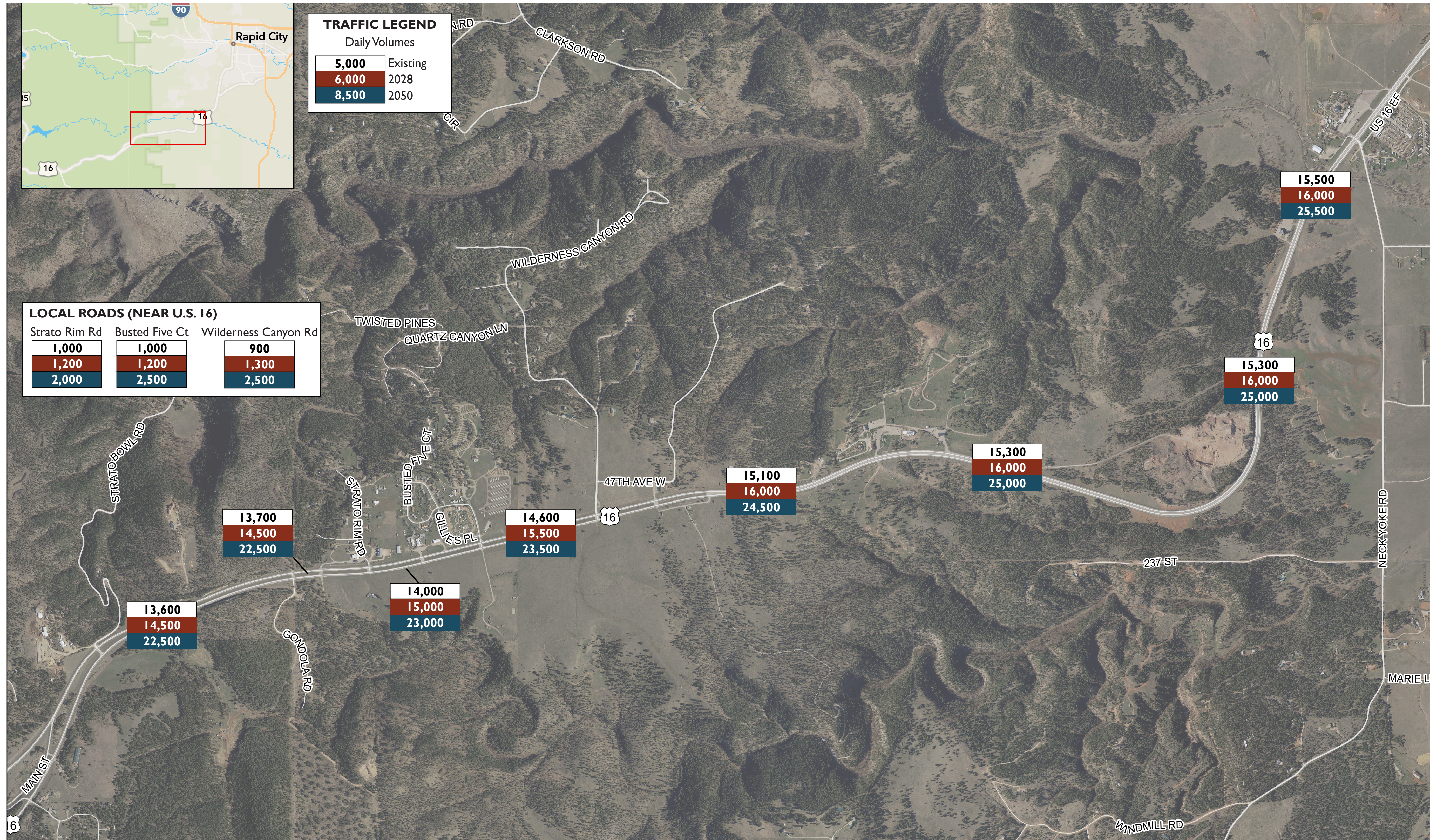
### SEVERE INJURY CRASH HISTORY (2018-2022)





# DAILY TRAFFIC FORECASTS

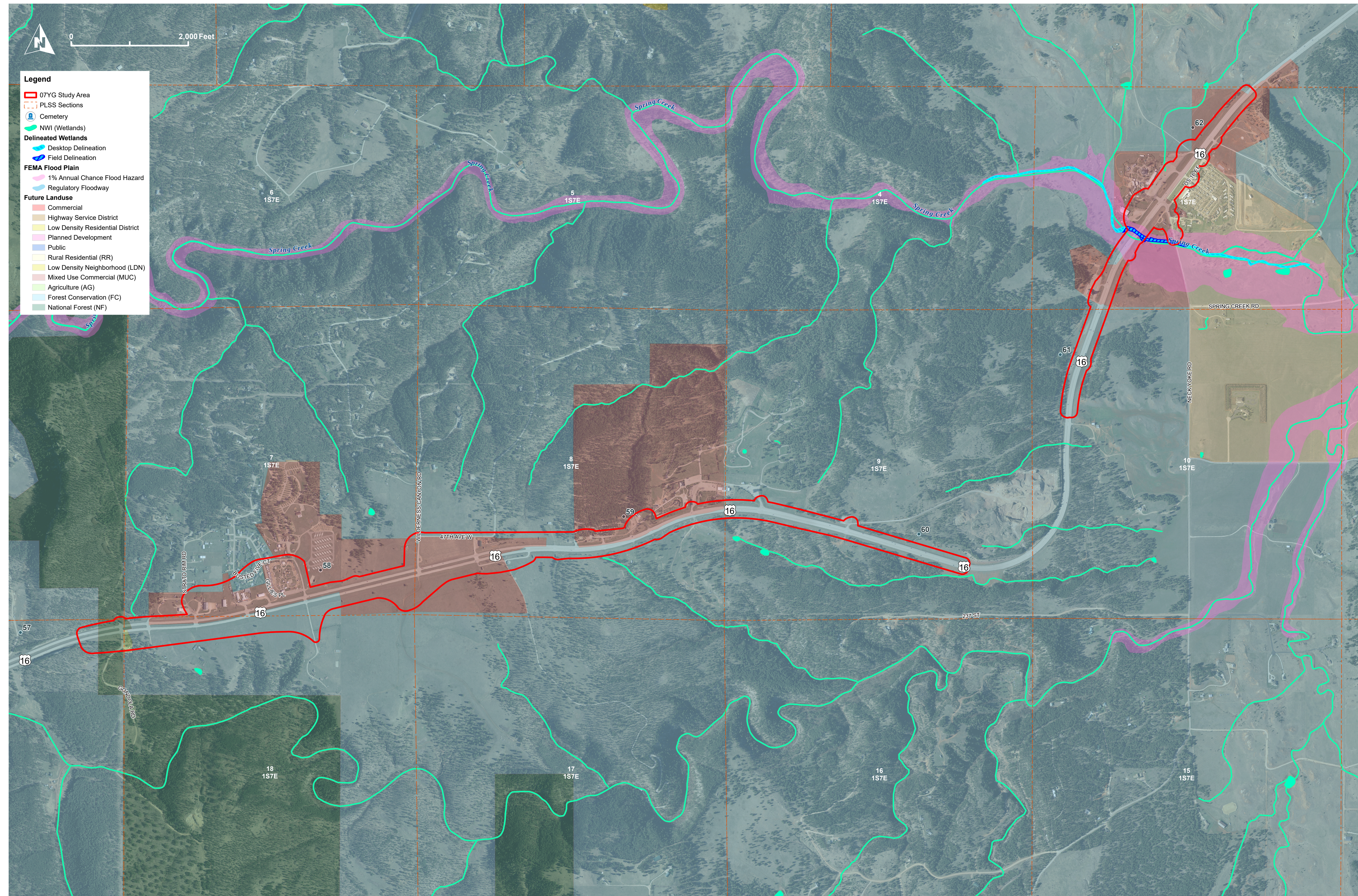
## U.S. HIGHWAY 16 CORRIDOR STUDY: RURAL SUB-AREA ANALYSIS





# ENVIRONMENTAL CONSIDERATIONS

## U.S. HIGHWAY 16 CORRIDOR STUDY: RURAL SUB-AREA ANALYSIS



U.S. 16 serves local traffic and tourism. U.S. 16 is the primary route into the Black Hills and associated tourist destinations, including Mount Rushmore National Monument and the Black Hills National Forest along with private attractions.

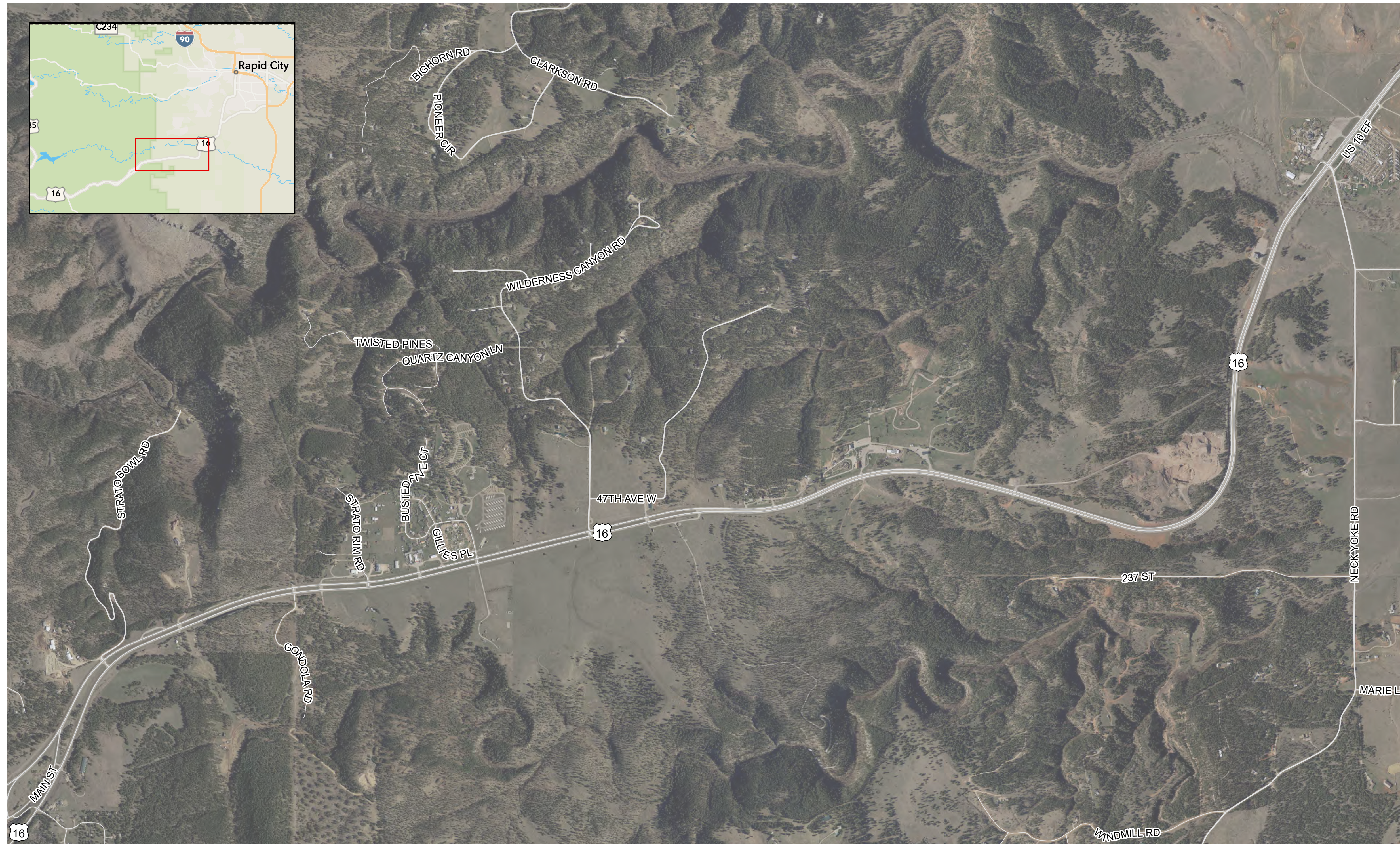
The need for the project is to:

- **Address local and regional trips along U.S. 16 corridor:** Considering the corridor as continuous roadway segment creating system connectivity local and tourism traffic.
- **Reduce traffic congestion from continued growth and urbanization:** Reviewing the need for roadway improvements to accommodate existing and future traffic numbers.



# ENVIRONMENTAL TOPOGRAPHY

## U.S. HIGHWAY 16 CORRIDOR STUDY: RURAL SUB-AREA ANALYSIS



U.S. 16 serves local traffic and tourism. U.S. 16 is the primary route into the Black Hills and associated tourist destinations, including Mount Rushmore National Monument and the Black Hills National Forest along with private attractions.

- Archaeological/Historic Resources
- Wetlands and Streams
- Threatened and Endangered Species
- Wildlife
- Section 4(f)- Archeological/Historic Resources
- Noise